

Art Exhibition Guidelines

GUIDELINES FOR THE SUBMISSIONS OF ARTWORK 2024

The information presented in these guidelines has been collated to assist schools in the preparation for the submission of artworks for the Wests Ashfield Community Art Competition & Exhibition. The steps outlined below highlight the key due dates for entry forms, including delivery and collection of artwork.

Each school is invite to submit a maximum of up to 6 pieces of art per stage category, this is inclusive whether they are individual pieces or collaborative.

1) Registration, Artists Statement & Conditions of Entry – due by Friday 2 August.

Schools are required to register each piece of art separately.

When registering you will be required to provide the artists statement and will be agreeing to the terms and conditions of entry.

Your art can be personally dropped into the club or sent in by courier by COB Friday 2 August, to Wests Ashfield Leagues Club, 115 Liverpool Rd, Ashfield. Reception.

For identification purposes a copy of the Registration, Artists Statement & Conditions of Entry must be attached to the back of each piece.

Please note: The registration process has been upgraded whereby information will be saved prior to submitting so you can return to it at a later time.

2) The collection of art – From Monday 26 August – Friday 6 September from the main Reception.

Please note: Wests Ashfield will not take any responsibility for any uncollected art. There are no facilities for storage of these artworks and they will be disposed of after the close of the collection date.

ENTRY CRITERIA

The HB Group Art Competition & Exhibition is open to all Inner West primary and secondary schools and their students.

Works will not be accepted without a completed Registration, Artist Statement and Conditions of Entry.

All works submitted must meet the following as stated in these guidelines to be accepted into the Competition and Exhibition. This includes submission of works from students who completed year 12 the previous year.

Students and ex – students cannot submit works directly into the exhibition without school approval.

THE ART

Each primary & secondary school is invited to submit up to a maximum of 6 pieces of art per stage/category, this is inclusive whether they are individual pieces or collaborative works.

Primary: 1, 2 & 3

Secondary: 4, 5 & 6

- Primary art is to be a minimum size of A4
- Secondary art is to comply with current HSC requirements for weight, size and suitability for showcase events.

Media types accepted are as follows:

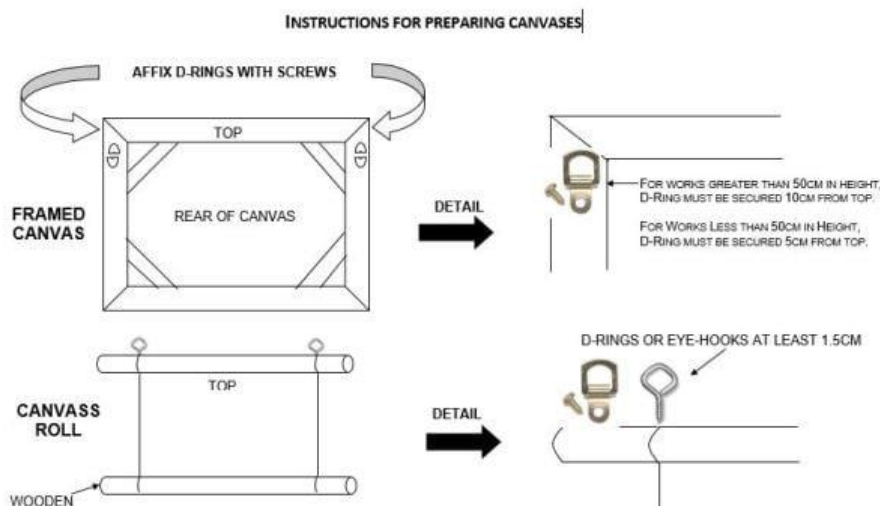
- 1) Painting \ Sketch etc.
- 2) Printmaking
- 3) Photography
- 4) Pottery

THE DISPLAY

The committee will use its discretion in the display of all works. Given the limited display area for the exhibition, an entire body of work may not necessarily be displayed. Works not selected for display will be communicated with each school.

THE PREPARATION OF ART

- Schools are responsible for the professional presentation of each work. Where required Wests Ashfield will mount art onto foam board for display purposes. The committee will use its discretion in the case of works that arrive inadequately prepared for display.
- Unframed works on paper (drawings, paintings, prints photographs etc) are asked to be firmly mounted on core board/heavy weight card or such.
- If a work consists of more than 5 pieces it is requested that it be assembled prior to submission. For works with 5 or less pieces schools are asked to supply a diagram or photograph to ensure that the pieces are assembled and displayed as intended.
- Framed work and sketched canvases must have secured D-rings affixed with screws to each end on the back. For works greater than 50cm in height, D-ring must be at least 10 cm from the top. For works less than 50cm in height the D-rings must be 5 cm from the top.
- Unstretched canvases/textiles must be secured to a dowel rod and have D-rings affixed with screws/super-glue or eye-hooks at each end (as per sample shown on the below diagram).



ART EXHIBITION- PRIZES

This year's Art Exhibition competition will be awarding schools and their students a share in **\$6,700**.

The awards consist of a combination of: student Art supplies, Vouchers, Contemporary Art Museum memberships and cash.

The categories for prizes are in line with the school stages:

Primary: 1, 2 & 3 & Secondary: 4, 5 & 6

PRIMARY SCHOOL CATEGORIES & PRIZES

Category	Student	School
Stage 1 Runner up	Art pack	\$100
Stage 1 Winner	Art pack \$50 Voucher	\$200
Stage 2 Runner up	Art pack	\$100
Stage 2 Winner	Art pack \$50 Voucher	\$200
Stage 3 Runner up	Art pack	\$100
Stage 3 Winner	Art pack \$50 Voucher	\$200
People's Choice	\$350	\$500

SECONDARY SCHOOL CATEGORIES & PRIZES

Category	Student	School
Stage 4 Runner up	MCA Membership	\$250
Stage 4 Winner	MCA Membership \$100 Voucher	\$500
Stage 5 Runner up	MCA Membership	\$250
Stage 5 Winner	MCA Membership \$100 Voucher	\$500
Stage 6 Runner up	MCA Membership	\$250
Stage 6 Winner	MCA Membership \$100 Voucher	\$500
People's Choice	\$500	\$1,000

*MCA = Museum of Contemporary Art

